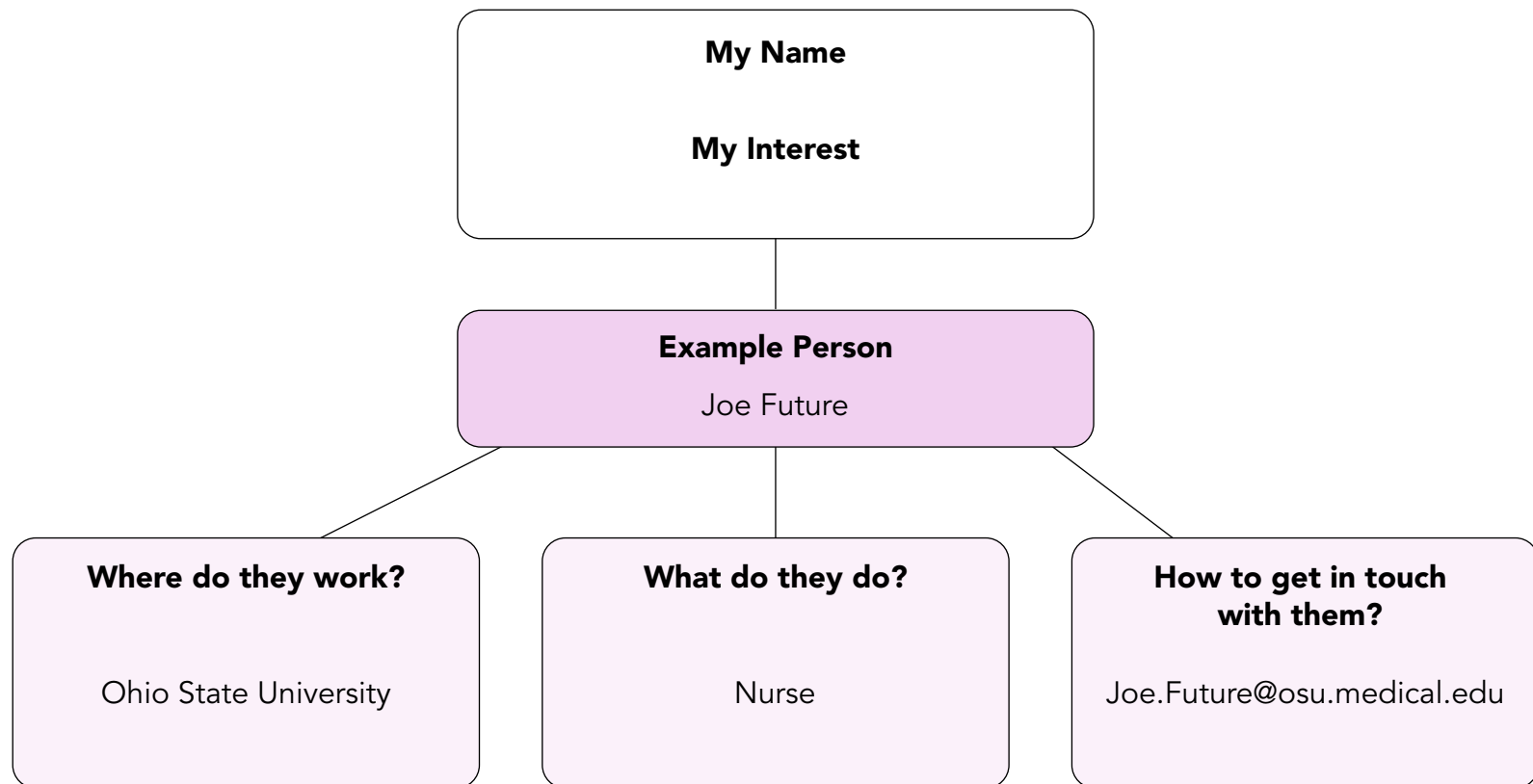


# My Network

Who are the people you know? Maybe they are family, friends, teachers, or people in your community. Fill in where they work, what they do, and how to reach them (email/phone number).

You can also let these people know you are interested in learning more about what they do through an informational interview, worksite tour, or job shadowing experience.

Or perhaps ask them to connect you to someone in their organization who works in a role or department you are interested in.



# My Network

Who are the people you know? Maybe they are family, friends, teachers, or people in your community. Fill in where they work, what they do, and how to reach them (email/phone number).

You can also let these people know you are interested in learning more about what they do through an informational interview, worksite tour, or job shadowing experience.

Or perhaps ask them to connect you to someone in their organization who works in a role or department you are interested in.

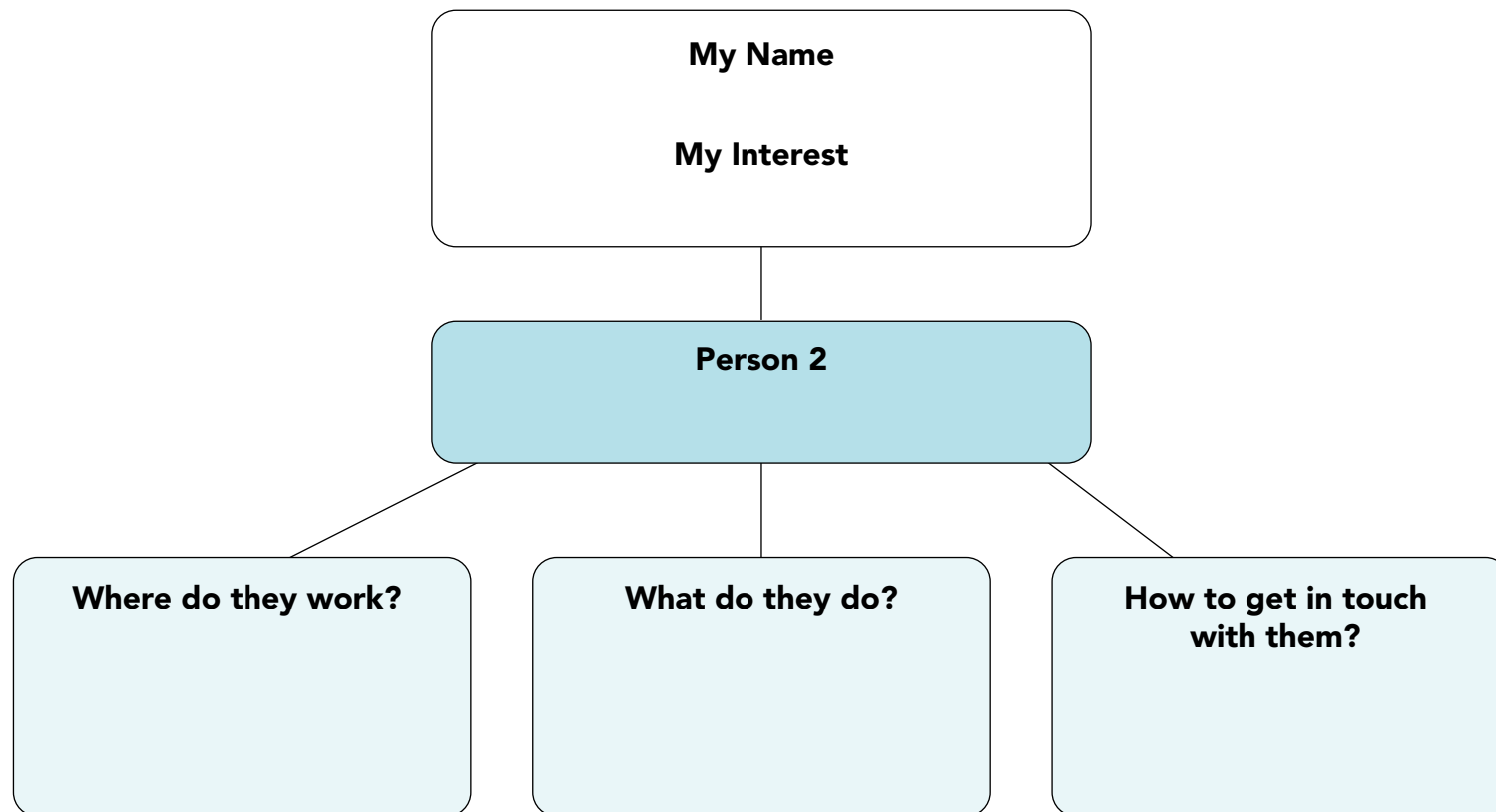
```
graph TD; A["My Name  
My Interest"] --- B["Person 1"]; B --- C["Where do they work?"]; B --- D["What do they do?"]; B --- E["How to get in touch with them?"]
```

# My Network

Who are the people you know? Maybe they are family, friends, teachers, or people in your community. Fill in where they work, what they do, and how to reach them (email/phone number).

You can also let these people know you are interested in learning more about what they do through an informational interview, worksite tour, or job shadowing experience.

Or perhaps ask them to connect you to someone in their organization who works in a role or department you are interested in.



# My Network

Who are the people you know? Maybe they are family, friends, teachers, or people in your community. Fill in where they work, what they do, and how to reach them (email/phone number).

You can also let these people know you are interested in learning more about what they do through an informational interview, worksite tour, or job shadowing experience.

Or perhaps ask them to connect you to someone in their organization who works in a role or department you are interested in.

```
graph TD; A["My Name  
My Interest"] --- B["Person 3"]; B --- C["Where do they work?"]; B --- D["What do they do?"]; B --- E["How to get in touch with them?"]
```

# My Network

Who are the people you know? Maybe they are family, friends, teachers, or people in your community. Fill in where they work, what they do, and how to reach them (email/phone number).

You can also let these people know you are interested in learning more about what they do through an informational interview, worksite tour, or job shadowing experience.

Or perhaps ask them to connect you to someone in their organization who works in a role or department you are interested in.

```
graph TD; A["My Name  
My Interest"] --- B["Person 4"]; B --- C["Where do they work?"]; B --- D["What do they do?"]; B --- E["How to get in touch with them?"]
```