

My Path to Employment



Employment First means I am given a chance to think about having a job in the community as a first choice.

Where do I want to work?

What do I like to do?

What am I good at?

What are my goals?

Why Employment First?

Everyone has strengths and talents that help make their community better. The vision for Employment First is that every person has the opportunity to explore careers and find jobs that fit what they like and are good at.

Employment can help you earn money, meet people, learn new things, feel proud, and live the life you want. Employers and community members benefit when more people with different skills and experiences are part of the workforce.

Employment First is about building an Ohio where all people have a chance to succeed at work and in life. When all members take part and contribute to communities, everyone wins.

What Is Community Employment?

There are many ways to work in the community. "Community employment" means working in jobs or careers that are available to anyone, whether they have a disability or not.

Community employment can mean:

- Working part-time or full-time
- Working at a job site or from home
- Starting your own business

The important thing is that you get to choose what is right for you.

How Can I Learn More and Get the Help I Need?

Community employment is possible for everyone, and support is available to help you along the way.

If you have a support administrator (SSA) from your county board of developmental disabilities, they can help you find information, services, and support. Some county boards of developmental disabilities also have Employment Navigators or Specialists to assist you.

You can learn more by visiting the [Ohio Employment First website](#).

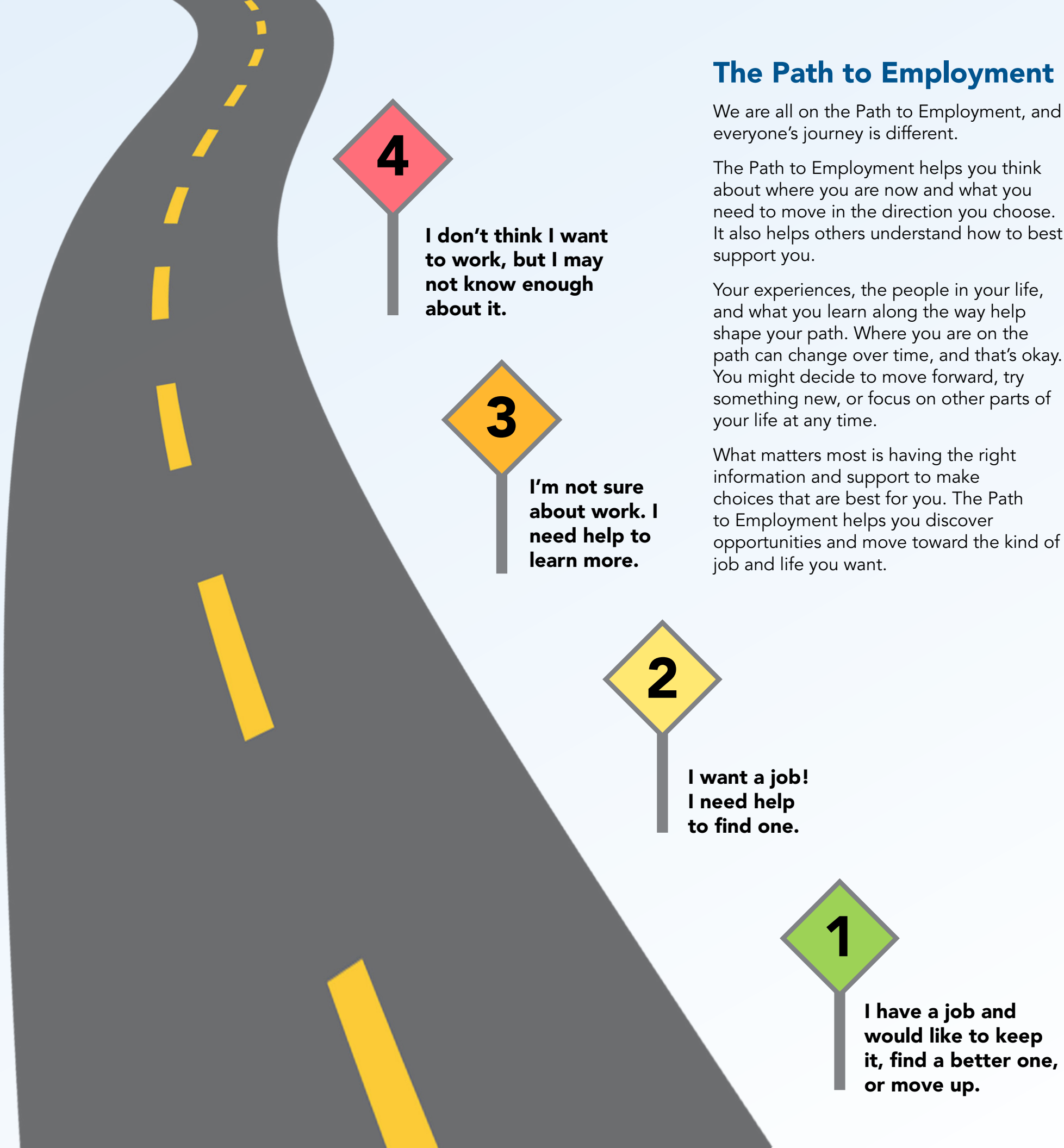
The Path to Employment

We are all on the Path to Employment, and everyone's journey is different.

The Path to Employment helps you think about where you are now and what you need to move in the direction you choose. It also helps others understand how to best support you.

Your experiences, the people in your life, and what you learn along the way help shape your path. Where you are on the path can change over time, and that's okay. You might decide to move forward, try something new, or focus on other parts of your life at any time.

What matters most is having the right information and support to make choices that are best for you. The Path to Employment helps you discover opportunities and move toward the kind of job and life you want.



4

I don't think I want to work, but I may not know enough about it.

3

I'm not sure about work. I need help to learn more.

2

I want a job! I need help to find one.

1

I have a job and would like to keep it, find a better one, or move up.

What does having a job mean to me?

Money

Choices

Success

Friends



ohioemploymentfirst.org



Employment First