



2026 Innovation Summit
Opportunities in Motion

Access Guide

Tuesday, June 2, 2026

**Quest Conference Center
9200 Worthington Road, Suite 400
Westerville, OH 43082**

Table of Contents

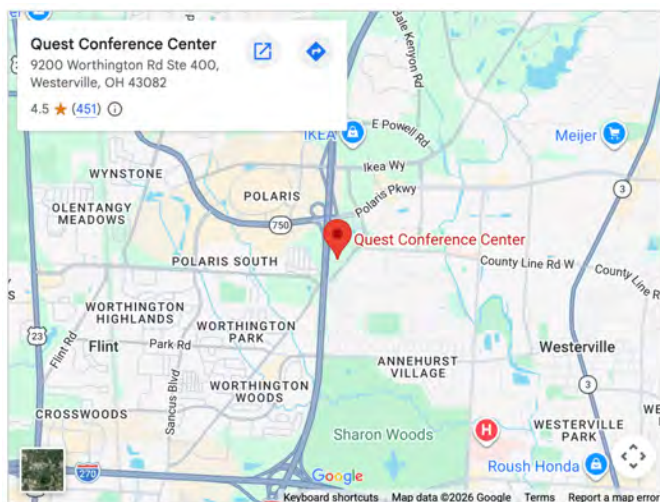
Section	Page Number
Schedule	2
Getting to Quest	2
Parking and Drop-Off	3
Getting to the Innovation Summit Space	3
Quest Conference Center Map	4
Access and Support	5
Universal Changing Station	5
Service Animal Relief Areas	5

Schedule

Time	Event	Room
8:30-9:30 am	Registration and Networking	Edison 1 & 2
9:30-10:30 am	Opening Remarks and Panel Discussion	Edison 1 & 2
10:30-10:40 am	Break	*
10:40-11:40 am	Breakout Session 1	*
11:40-12:40 pm	Lunch Break	Edison 1 & 2
12:40-1:40 pm	Breakout Session 2	*
1:40-1:55 pm	Snack Break	*
1:55-2:55 pm	Breakout Session 3	*
2:55-3:10 pm	Break	*
3:10-4:00 pm	Guided Reflection, Action Planning, and Closing	Edison 1 & 2

(* See full agenda for details)

Getting to Quest



Quest Conference Center is at 9200 Worthington Road, Suite 400, in Westerville, Ohio, 43082. It is on the north side of Columbus.

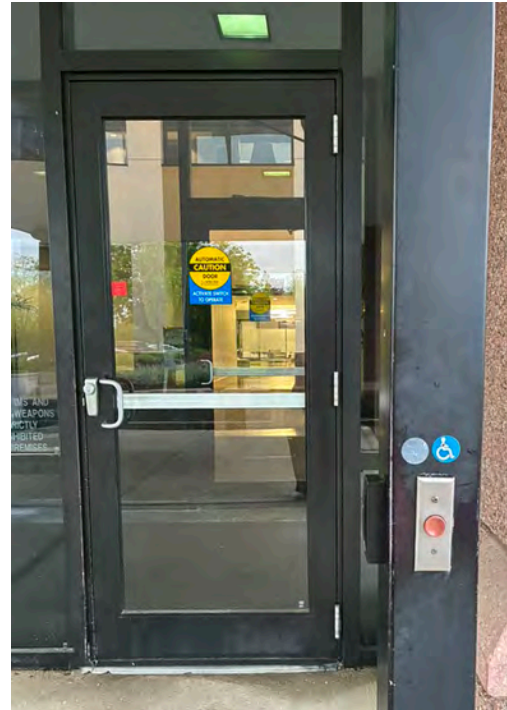
The location is near Interstate 71 at Exit 121 (Polaris Parkway) and close to Interstate 270. It is easy to get there from downtown Columbus, the airport, and other main roads.

Click the map to the left for directions.

Parking and Drop-Off

Quest Conference Center has ample, free parking. The wheelchair-accessible Main Entrance includes a covered drop-off area and an automatic door opener.

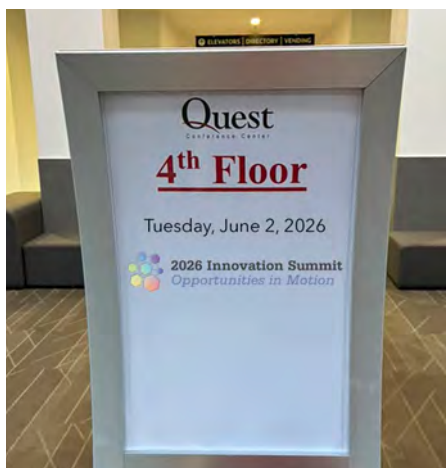
There are 9 accessible parking spaces to the left of the main entrance and 9 accessible parking spaces to the right of the main entrance.



Getting to the Innovation Summit Space

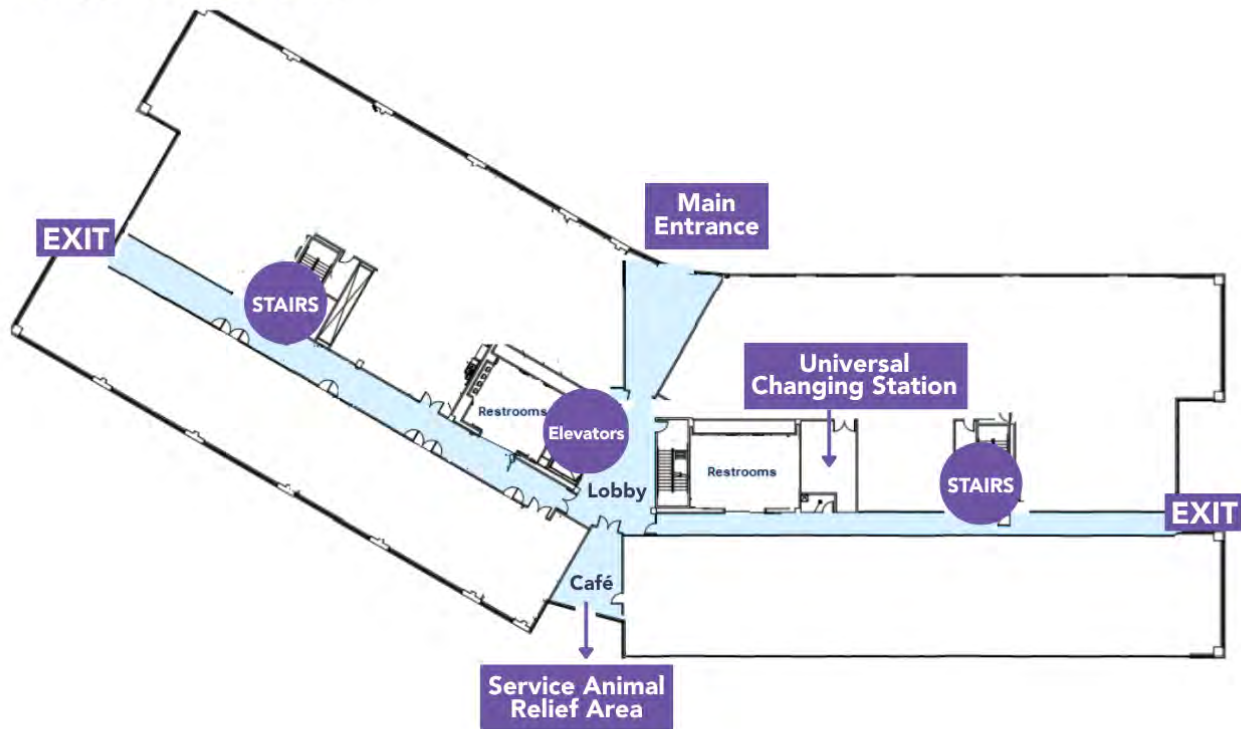
After entering the Main Entrance to the Lobby, a standing sign will provide the Innovation Summit's location on the Fourth Floor.

There are three elevators further past the lobby on the right side to take you to the Fourth Floor. The Innovation Summit space is at the Ohio Inventors Wing.

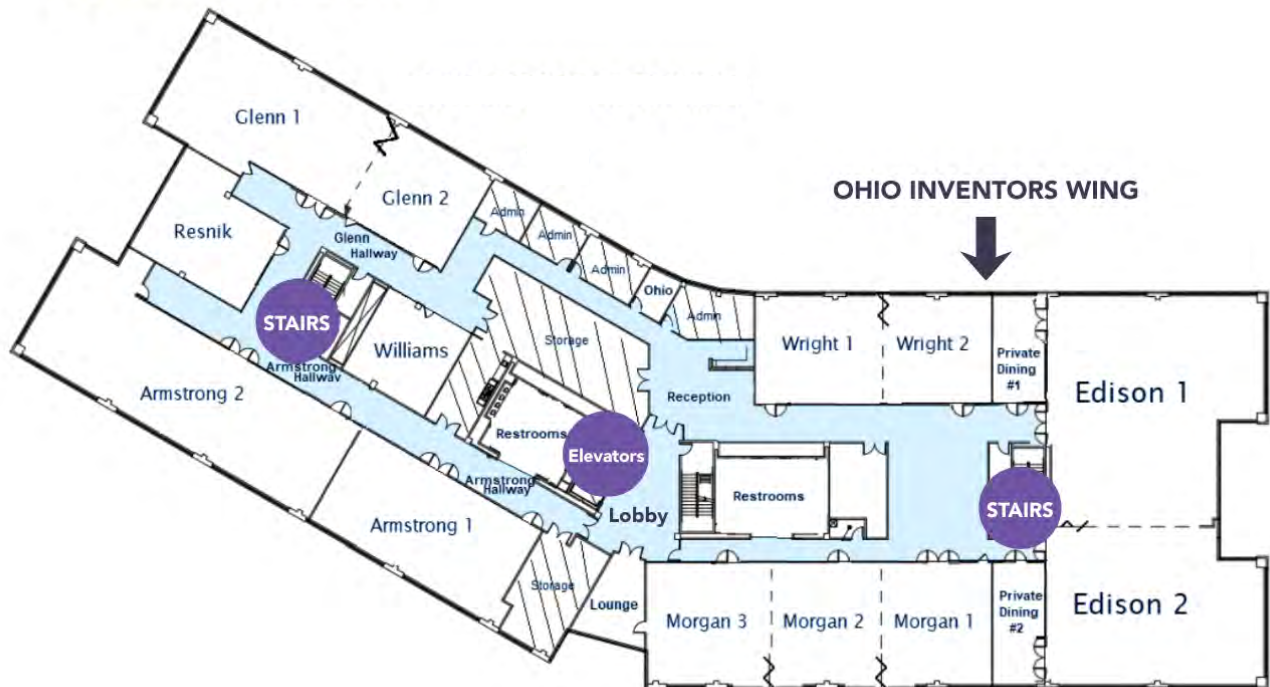


Quest Conference Center Map

FIRST FLOOR



FOURTH FLOOR



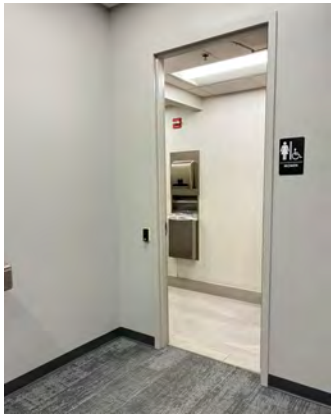
Access and Support

During the event, if a need arises, OCALI Support Members are here to help. Please look for us with our badges and reach out.

Universal Changing Station

A private, universal changing table is available on the First Floor. The room contains a restroom area that leads to a locker and shower room, where the table is located.

To access the Universal Changing Station, please see one of our OCALI Support Members for the passcard.



Service Animal Relief Areas

Grassy relief areas are located on the sides and back of the Quest building. To reach them, take the elevator to the First Floor and exit through the Main Entrance, or ask an OCALI Support Member for a passkey to use the café door for direct outdoor access. Please get the passkey before leaving the Fourth Floor, since it will be needed to re-enter the building.

