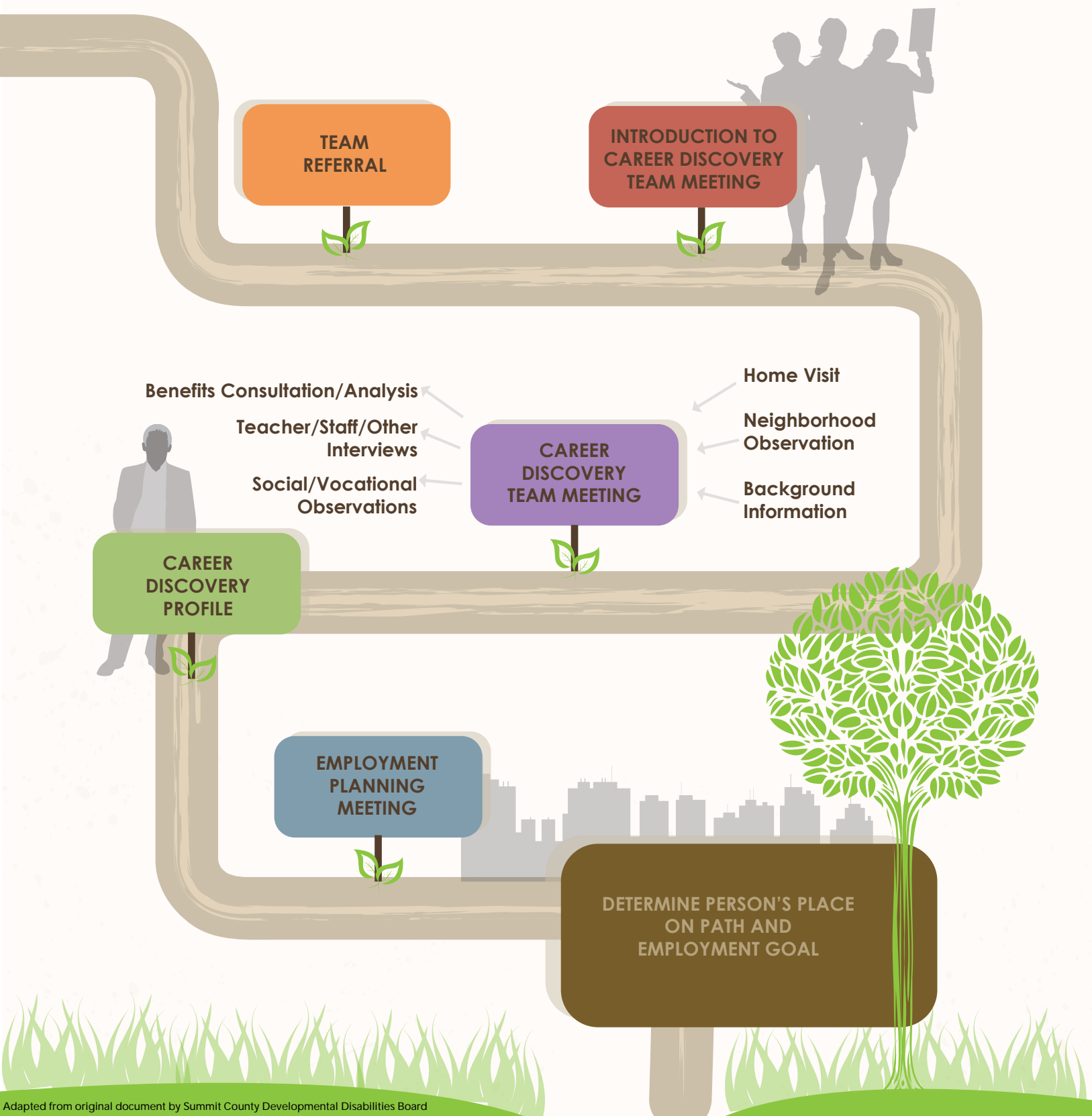


Career Discovery Flow Chart

Your Path to Community Employment

Use this flow chart and accompanying table to determine the steps and supports you need to reach your employment goal.



Suggested Services and Supports for Each Places on the Path to Community Employment

PLACE ON THE PATH TO COMMUNITY EMPLOYMENT

SERVICES & SUPPORTS

Place #1 I have a job but would like a better one or to move up - The individual is already engaged in community employment and needs support for job stabilization and improvement, or career advancement.



- Follow-Along
- Job Coaching
- Natural Support Facilitation
- Skill Development
- Education and Training
- Job Development and Placement for Career Advancement

Place #2 I want a job! I need help to find one - The individual expresses a desire to obtain community employment but is not currently employed and needs support to obtain employment or identify career options and employment opportunities.



- Referral to Vocational Rehabilitation
- Career Exploration
 - Community-Based Assessment
 - Skill Development
 - Job Development
 - Job Coaching
 - Retention

Place #3 I'm not sure about work. I need help to learn more - The individual is unsure about community employment and needs support to identify career options and employment opportunities and the economic impact for the individual of the decision to work.



- Awareness of Employment Support Services
- Meeting with Peers who are Employed
- Family Meetings
- Interviewing Formal and Informal Support Network
- Learning from Authentic Experiences
- Exploring the Multiple Benefits of Employment
- Addressing Individual Concerns
- Referral to Vocational Rehabilitation, if Appropriate

Place #4 I don't want to work, but I may not know enough about it - The individual does not express a desire to work and needs support to learn more about careers and employment opportunities and the economic impact for the individual of the decision not to work.



- Awareness of Employment Support Services
- Meeting with Peers who are Employed
- Family Meetings
- Interviewing Formal and Informal Support Network
- Learning from Authentic Experiences
- Exploring the Multiple Benefits of Employment
- Addressing Individual Concerns